



# GAT MONTHLY MEMBERSHIP PROGRESS REPORT

Results as of: 4/30/2022

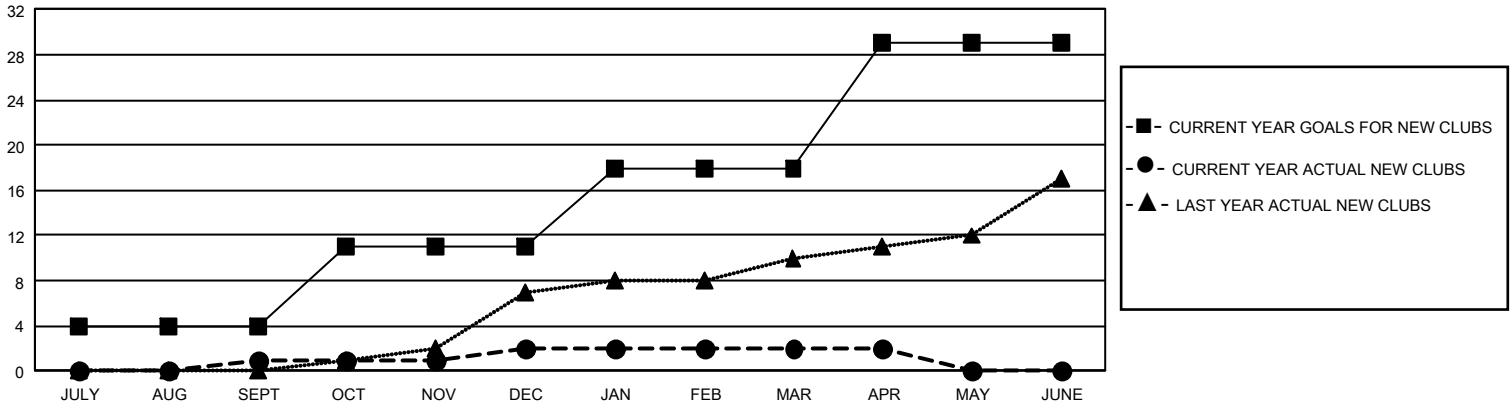
## GMT Constitutional Area 1, Group E

REPORT DOES NOT INCLUDE CLUBS IN UNDISTRICTED AREAS.

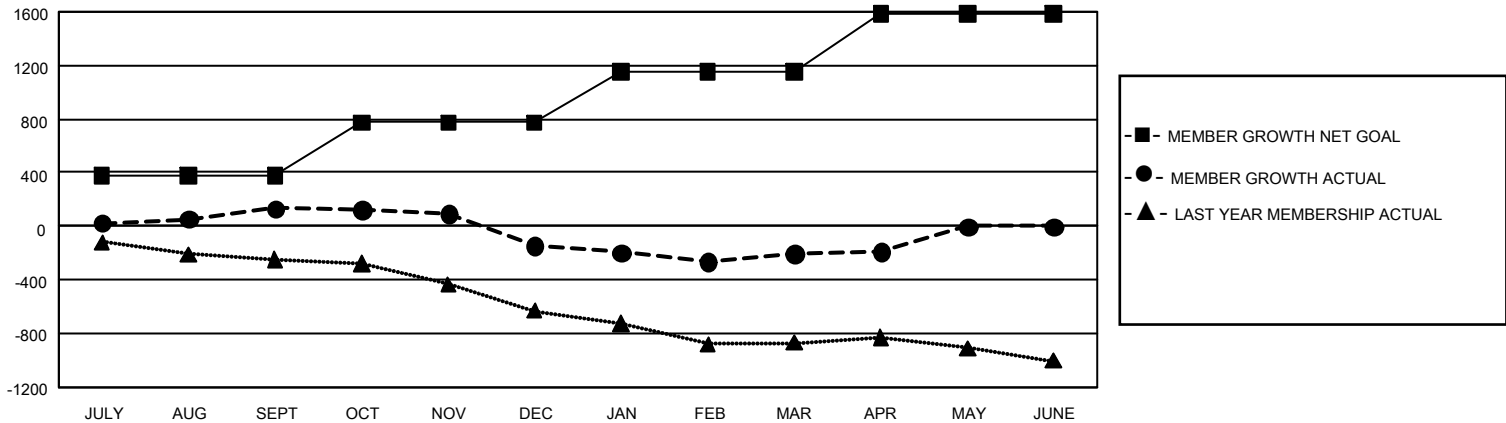
Clubs			
RESULTS FOR 2021-2022			
QUARTER	NEW CLUB GOAL	NEW CLUBS	DROPPED CLUBS
JULY/AUG/SEPT	12	1	7
OCT/NOV/DEC	21	1	11
JAN/FEB/MAR	21	0	4
APR/MAY/JUNE	33	0	1

Members			
RESULTS FOR 2021-2022			
QUARTER	MEMBER GROWTH NET GOAL	MEMBER GROWTH ACTUAL	DROPPED MEMBERS ACTUAL (including transfers)
JULY/AUG/SEPT	378	888	646
OCT/NOV/DEC	397	679	879
JAN/FEB/MAR	375	694	706
APR/MAY/JUNE	435	223	181

GOALS AND ACTUAL NEW CLUBS CUMULATIVE



GOALS AND ACTUAL MEMBERS CUMULATIVE



<b>DROPPED CLUBS: 23</b>	598 CLUBS OF 1,032 ADDED 1 OR MORE NEW MEMBERS	<b>GENDER DISTRIBUTION</b>	
		MALE 21,970 (71.69%) FEMALE 8,675 (28.31%) NON BINARY 0 (0.00%) PREFER NOT TO ANSWER 1 (0.00%)	
<b>DROPPED MEMBERS</b>		<a href="#">CLICK HERE FOR CUMULATIVE MEMBERSHIP DATA</a>	
DECEASED 422 CLUB CANCELLED 115 OTHER 1,875 <b>TOTAL 2,412</b>	TOTAL FAMILY UNIT MEMBERS 5,479 FAMILY MEMBERS PAYING HALF DUES 2,801		